

E6 PTP CNC



DESCRIPTION

An all-rounder work center suitable for milling, routing, drilling, side milling, sawing and other applications. Ideal for panel furniture, solid wood furniture, office furniture, wooden door productions, as well as other non-metal and soft metal applications. The double work zones guarantee non-stop work cycle where an operator can load and unload workpieces on one zone without interrupting the machine operation on the other. It features world class components from Italy and Germany with strict machining procedures.

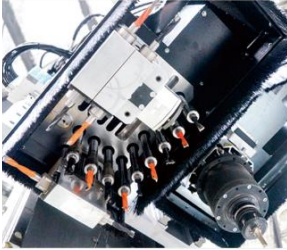
KEY FEATURES

- Features world's first class components and strict machining procedures. The enclosure over the gantry with LED light strip for display of the machine status prevents flying out of materials and greatly enhances safety.
- The operator needs only to scan the barcode and the machine will carry out the job automatically.

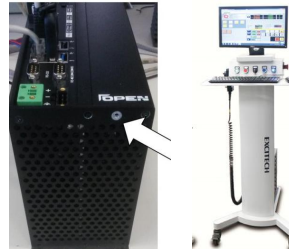
STANDARD CONFIGURATIONS

Model	E6 PTP - 3 Axes
Traveling Size	3400*1640*250mm
Working Size	3060*1260*100mm
Table Size	3060*1200mm
Transmission	X/Y rack and pinion drive, Z ball screw drive
Table	Pods and rails from SCHMALZ
Spindle	9 KW HSD ISO Spindle
Traveling speed	80m/min
Tool magazine	8 slots carousel with Stepper motor
Software	EXCICAM
Driving system	Japan YASKAWA servo system
Cable	Germany Igus cables
Relay	Schneider relay
Controller	OSAI made in Italy with Lenovo computer I5 8GB
Tool holder	3 pieces of tool holders ISO ER32
Pump	1 set 4KW Becker pump with 140m ³ /h
Voltage	3P 415V 50HZ

KEY FEATURES E6 PTP CNC



Italian HSD 9 KW Spindle
12KW is available upon
request (optional)
Italian drill bank
9(V)+6(H)+1 saw.



Italy OSAI controller.
Powerful and friendly
in operation
Smart and easy to
move console.



16 Slot Smart Carousel
Driven via Servo Motor.
Direct connection,
time saving during
tool changing



Pod and rail table that is
divided into 2 work zones.
This machine is mainly used
to make solid wood door
or for panel processing.



Japan YASKAWA Servo motor
Shimpo reducer, reliable
and long life span



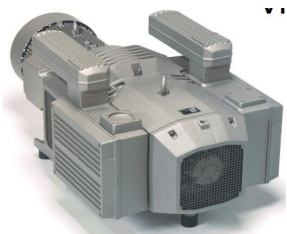
Protective cover around
the gantry, CE standard



Smart pop-up pins



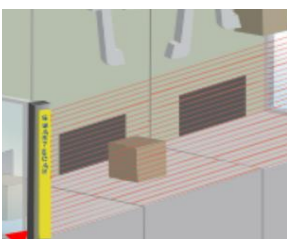
18 moveable vacuum cups,
in 3 different sizes to work
with various panel sizes.



Upgraded to German
brand Becker pump with
5.5KW, strong suction
capacity, 250m³/h



Air conditioner for the
cabinet, cooling down the
inner temperature of the
cabinet, protecting the
electrical components inside.



Protection light curtain
(barrier), 1320 mm
protection range , picture
indicated is stand style,
lie down is available



Shown the vacuum cups
positions for the regular
size (not shaped size)

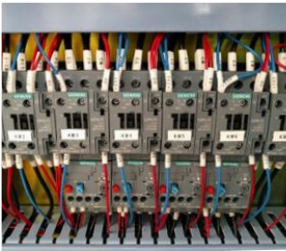
KEY FEATURES E6 PTP CNC



Heavy load plugs enable easy installation and maintenance.



Germany Flexible Icus cables, heat resistance, wearing resistance, long life span, high quality



German Siemens Relay and button, reliable and good quality



HSD High quality C axis, rotate at 360 degrees.