

## EP3800E SLIDING TABLE PANEL SAW



### DESCRIPTION

The EP3800E Sliding table panel saw, encapsulates modern technology with a robustness you would expect out of a quality panels saw. With its 3800mm seamless sliding table, to a maximum 400mm saw blade, this machine will handle any light or heavy load. Solid timber? no problem!

The panel saw comes standard with 3 axes programmable movement and three digital stops on the cross cut fence.

### KEY FEATURES

- Sliding Carriage: maximum cut quality guaranteed over time
- Operator's Support: one cut only, the correct one
- Saw Unit: a perfect cut

## STANDARD CONFIGURATIONS

Max cutting height at 90° (mm)	125mm with blade max 400mm
Max cutting height at 45° (mm)	85mm with blade max 400mm
Scoring saw Diameter	120mm
Blade tilt (degrees)	46
Blades lifting and tilt	Electronic Programmable
Control and working height readout	Motion 1
Main blade rotating speed (rpm)	5000rpm
Scoring unit rotating speed (rpm)	8000
Saw unit motor power	
(S1) kW (HP)	7kw (10hp) Hz50
Scoring unit motor power (S1) kW (HP)	1,3 (1,7) Hz50
Squaring capacity 3800 carriage (mm)	3800x3200
Cutting width on parallel fence (mm)	1250
Exhaust outlet diameter at the base (mm):	120
Exhaust outlet diameter on overhead protection (mm):	80

## KEY FEATURES

### EP3800 SLIDING TABLE PANEL SAW



Saw Unit with a max cutting height of 95 mm. The cast iron saw unit with a rigid closed loop structure can accommodate a blade up to 315 mm diameter with the scoring blade mounted.

Mounted scoring blade ensures perfect and easy cutting of veneer panels and thick solid wood material. The saw blade uses 100% of the motor power, thanks to the scoring blade with an independent motor as standard.



Upper mobile control panel with "EASY" electronic control with 7" LCD display. Electronic positioning of the vertical positioning and tilting of tool. Electronic positioning of the parallel fence positions.

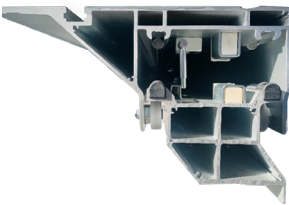
Electronic positioning of the parallel fence positions. Operator's help function for the carrying out of complex cutting. Optional management of tools database Optional



Powered parallel fence controlled by NC Position reading by means of encoder Sliding on linear fence with recirculating ball bushing through recirculating ball screws



Continuous adjustment by means of pushbutton or automatic positioning Possibility of incremental positioning Automatic set up Total exclusion of fence under the worktable. Cutting width 1250mm



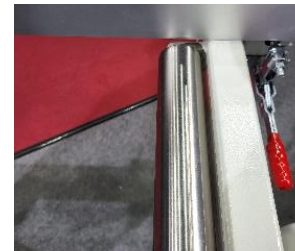
Anodized aluminium alloy sliding carriage on high precision sub rollers hardened steel guides. This table is the exact copy of the most famous German brand panel saw in the world. Sliding table length: 3800mm



Fence for angular cutting Squaring fence for angular cuts.



Squaring fence with no. 3 LCD readouts for stop position. Stop is equipped with electronic digital readout with detecting system on magnetic band and readout on LCD display.



Polished steel roller for large panels



Safety Protections  
Emergency push button located on the front machine side.  
Emergency push buttons located on parallel fence side.  
Blade access door with quick locking and safety microswitch.



Safety Protections  
Overload protection.  
Overhead saw guard.  
Certificate of conformity with "C.E. Standards".