

Excitech Australia Pty Ltd
ABN 38 665 472 123

30/10 Yato rd,
Prestons 2170

M: 0424 362 088

E: service@excitechaustralia.au

Date: 08-09-2025

Quotation: #40_1

Customer: #

Attn: Hope Ojeda
Joe bloggs joinery

RE: E3-1228 LR, E6PTP

Thank you for your recent inquiry regarding Excitech Australia's E3-1228 LR, E6PTP.

EXCITECH: LEADING THE WAY WITH CONTINUOUS INNOVATION AND EXCELLENCE

Since 2006, Excitech has become a leading name in machinery manufacturing. With facilities in Shandong and Guangdong, China, we are committed to delivering topquality products that meet the highest standards. This dedication has helped us achieve significant milestones and stay competitive in a fast-changing market.

We understand that choosing the right machinery is a significant investment. Therefore, we are committed to creating unending value for our customers and ensuring that they receive the best possible service.

Please find enclosed a formal proposal for the supply and installation of the E3-1228 LR, E6PTP.

Should you require further information, please do not hesitate to contact me at **0424 362 088** or email me at jose@excitechaustralia.au.

Your faithfully,

Jose Ojeda
Managing Director

E3-1228 STAND ALONE MACHINE



DESCRIPTION

This entry-level all-rounder is an extraordinary solution with a competitive price, allowing you to choose your tool changer; linear or carousel. Using world-class components, e.g. 9.0kw ATC spindle, Innovance servo motor driving system, Japanese Shimpo gear reducer, Schneider low voltage electrical components, Delta inverter, it guarantees optimum performance. Combined with its versatile functions of routing, drilling, cutting, side-milling, edge chamfering, and so on, this machine is a must have for all industries.

KEY FEATURES

- Mainly using for cutting, grooving, drilling, and milling in one time, the process won't stop during tool changing.
- High-performance machine with extraordinary value.
- Easy operation with high production efficiency.

KEY FEATURES

E3-1836 FULL AUTOMATIC CELL WITH PRE-LABELLING

STANDARD CONFIGURATIONS



EXCITECH high quality 9KW S1 air cooling spindle, EXCITECH 5+4 vertical drill bank



WEIHONG NC Studio controller, Friendly and reliable
21.5" Touch screen



Smart pop-up pins and rails for panel positioning both for X & Y axis, controlled by foot pedal



Machine drive, Z ball screw
1 set Light barrier for safety protection with full cell return table



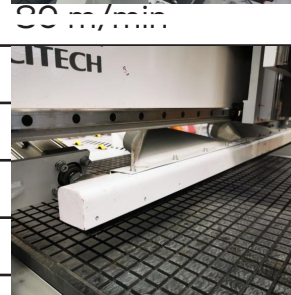
2 x 5.5kw pumps with strong suction capacity, holding the panels firmly during processing, no movement, no waste of panels



High quality linear guide and helical rack and pinion extrusion cabinet



Traveling speed
Carousel 16-slot, stepper motor, fast and efficient in tool changing.



Smart pusher under Weihong auto loading suction cups standard



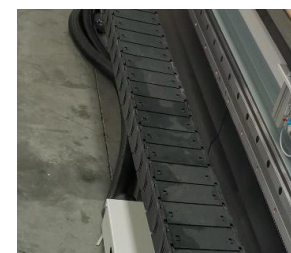
Golden type auto tool calibrator



Pressing roller for helping hold small panels



Auto lubrication pump



Flexible cables. Wear resistant, Heat resistance, long life span
Sealed chain for dust proof

KEY FEATURES E3-1228 STAND ALONE MACHINE



EXCITECH high quality 9KW S1 air cooling spindle, EXCITECH 5+4 vertical drill bank



WEIHONG NC Studio controller, Friendly and reliable 21.5" Touch screen



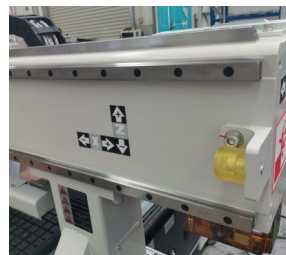
Smart pop-up pins and rails for panel positioning both for X & Y axis, controlled by foot pedal



1 set Light barrier for safety protection with full cell



2 x 4kw pumps with strong suction capacity, holding the panels firmly during processing, no movement, no waste of panels



High quality linear guide and helical rack and pinion ensuring quiet movement



Carousel 16-slot, stepper motor, fast and efficient in tool changing.



Smart pusher under gantry for easy unloading, helping save labour. Auto loading suction cups standard



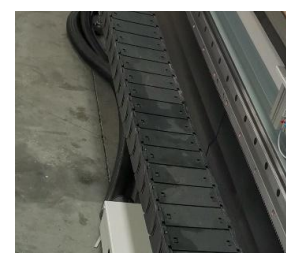
Golden type auto tool calibrator



Pressing roller for helping hold small panels



Auto lubrication pump



Flexible cables. Wear resistant, Heat resistance, long life span Sealed chain for dust proof

E6 PTP CNC



DESCRIPTION

An all-rounder work center suitable for milling, routing, drilling, side milling, sawing and other applications. Ideal for panel furniture, solid wood furniture, office furniture, wooden door productions, as well as other non-metal and soft metal applications. The double work zones guarantee non-stop work cycle where an operator can load and unload workpieces on one zone without interrupting the machine operation on the other. It features world class components from Italy and Germany with strict machining procedures.

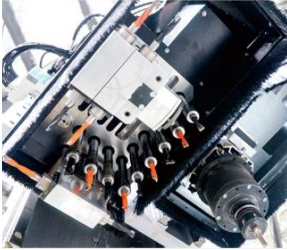
KEY FEATURES

- Features world's first class components and strict machining procedures. The enclosure over the gantry with LED light strip for display of the machine status prevents flying out of materials and greatly enhances safety.
- The operator needs only to scan the barcode and the machine will carry out the job automatically.

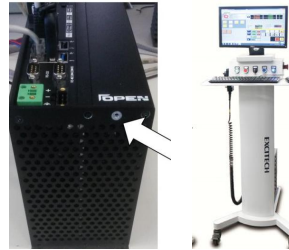
STANDARD CONFIGURATIONS

Model	E6 PTP - 3 Axes
Traveling Size	3400*1640*250mm
Working Size	3060*1260*100mm
Table Size	3060*1200mm
Transmission	X/Y rack and pinion drive, Z ball screw drive
Table	Pods and rails from SCHMALZ
Spindle	9 KW HSD ISO Spindle
Traveling speed	80m/min
Tool magazine	8 slots carousel with Stepper motor
Software	EXCICAM
Driving system	Japan YASKAWA servo system
Cable	Germany Igus cables
Relay	Schneider relay
Controller	OSAI made in Italy with Lenovo computer I5 8GB
Tool holder	3 pieces of tool holders ISO ER32
Pump	1 set 4KW Becker pump with 140m ³ /h
Voltage	3P 415V 50HZ

KEY FEATURES E6 PTP CNC



Italian HSD 9 KW Spindle
12KW is available upon
request (optional)
Italian drill bank
9(V)+6(H)+1 saw.



Italy OSAI controller.
Powerful and friendly
in operation
Smart and easy to
move console.



16 Slot Smart Carousel
Driven via Servo Motor.
Direct connection,
time saving during
tool changing



Pod and rail table that is
divided into 2 work zones.
This machine is mainly used
to make solid wood door
or for panel processing.



Japan YASKAWA Servo motor
Shimpo reducer, reliable
and long life span



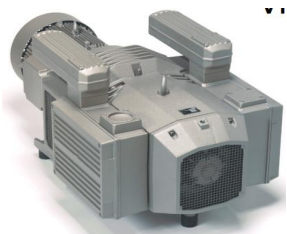
Protective cover around
the gantry, CE standard



Smart pop-up pins



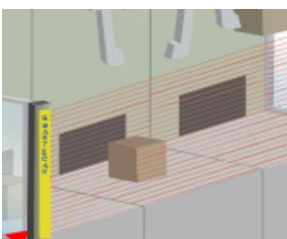
18 moveable vacuum cups,
in 3 different sizes to work
with various panel sizes.



Upgraded to German
brand Becker pump with
5.5KW, strong suction
capacity, 250m³/h



Air conditioner for the
cabinet, cooling down the
inner temperature of the
cabinet, protecting the
electrical components inside.



Protection light curtain
(barrier), 1320 mm
protection range , picture
indicated is stand style,
lie down is available

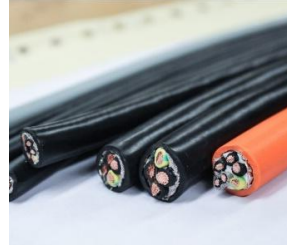


Shown the vacuum cups
positions for the regular
size (not shaped size)

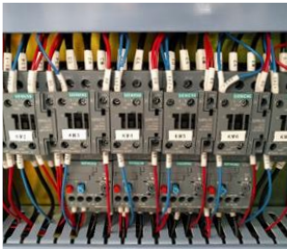
KEY FEATURES E6 PTP CNC



Heavy load plugs enable easy installation and maintenance.





Germany Flexible Icus cables, heat resistance, wearing resistance, long life span, high quality



German Siemens Relay and button, reliable and good quality



HSD High quality C axis, rotate at 360 degrees.

Model	Picture	Unit Price	Quantity	Total
E3-1228 LR		\$78,500.00	1	\$78,500.00
E6PTP		\$189,500.00	1	\$189,500.00
Subtotal				\$268,000.00
GST(10%)				\$26,800.00
Total Investment				\$294,800.00

TERMS AND CONDITIONS OF SALE

Sale of Goods	1. The "Seller" Excitech Australia Pty Ltd will sell, transfer and deliver to the "Buyer" the goods stipulated in the agreed provided tax invoice.
Payment Terms	2. The Buyer will accept the goods and pay for the goods as per the terms stipulated on the provided tax invoice, paid as follows: a. 30% deposit on acceptance of invoice prior to goods being ordered from the manufacturer. b. Either; 70% finance approval, undated bank guarantee or full cash payment required prior goods being shipped from the manufacturer to the Seller if the order is a custom build, Smart Factory or out of stock item. For goods that are already in stock with the Seller, 70% remaining payment is required prior to shipping to the Buyer. 3. Except as otherwise provided in this Agreement, the deposit is not refundable to the Buyer if this transaction is not completed.
Delivery	4. The goods will be deemed received by the Buyer when delivered to the stipulated delivery address. 5. Unless otherwise stipulated, the purchase price includes delivery and installation. Risk of Loss 6. The risk of loss from any casualty to the goods, regardless of the cause, will be on the Seller until the goods have been received by the Buyer. The Buyer will provide, at its expense, insurance on the goods.
Warranties	7. The Seller warrants that the Seller is the legal owner of the goods and has the right to sell the goods and warrants that the goods will be fit for purpose for which such goods are ordinarily intended. 8. The goods are sold with two (2) years manufacturer parts and labour warranty. All claims must be made within five (5) days of any issue arising.
Security Interest	9. The Seller remains a security interest in the goods until paid in full. Buyers Responsibility 10. The Buyer confirms the installation location meets the requirements of the Seller. This includes installation location that is cleared of all obstructions and has adequate space for the machine, accessories and operator work space. The purchaser accepts that any costings arising from the installation location not being prepared, or being unsuitable for the installation will be charged to the Buyer.
Installation	11. A vendor technician will install and train the Buyer in the goods operation. Estimated time frame will be discussed prior to delivery, but may take reasonably longer and will be discussed. Excuse for Delay or Failure to Perform 12. The Seller will not be liable in any way for any delay, non-delivery or default in shipment due to labour disputes, transportation shortage, delays in receipt of anything beyond the control of the Seller or its suppliers. If the Seller, in its sole judgment, will be prevented directly or indirectly, on account of any cause beyond its control, from delivering the goods at the time specified or within one month after the date of agreed delivery, then the Seller will have the right to terminate this Agreement by notice in writing to the Buyer, which notice will be accompanied by full refund of all sums paid by the Buyer pursuant to this Agreement. In all other cases, if the Seller fails to deliver the goods to the Buyer within the time and manner specified in this Agreement, the Buyer may provide written notice of the default to the Seller. If within seven (7) days of the notice being received, or within such other time period as agreed to by the parties, the default is not corrected, the Buyer may immediately terminate this Agreement.
Installation Cancellation	13. The Seller reserves the right to cancel this Agreement if the Buyer fails to pay for any shipment when due; in the event of the Buyers insolvency or bankruptcy; or if the Seller deems that its prospect of payment is impaired.

Customer / Company

Hope Ojeda
Joe bloggers joinery

Purchasers Signature

Date:

Sellers Signature

Date: 08-09-2025