

**Excitech Australia Pty Ltd**  
ABN 38 665 472 123

30/10 Yato rd,  
Prestons 2170

Date: 19-09-2025

Quotation: #47\_2

Customer: #

**Attn: Mike Fleischmann**  
Cad Cam Australia

**RE: EF463S, E6PTP**

Thank you for your recent inquiry regarding Excitech Australia's EF463S, E6PTP.

**EXCITECH: LEADING THE WAY WITH CONTINUOUS INNOVATION AND EXCELLENCE**

Since 2006, Excitech has become a leading name in machinery manufacturing. With facilities in Shandong and Guangdong, China, we are committed to delivering topquality products that meet the highest standards. This dedication has helped us achieve significant milestones and stay competitive in a fast-changing market.

We understand that choosing the right machinery is a significant investment. Therefore, we are committed to creating unending value for our customers and ensuring that they receive the best possible service.

Please find enclosed a formal proposal for the supply and installation of the EF463S, E6PTP.

Should you require further information, please do not hesitate to contact me at **0492806870** or email me at [michael@excitechaustralia.au](mailto:michael@excitechaustralia.au).

Your faithfully,

**Michael Fleischmann**  
**Managing Director**

## EF463S AUTOMATIC EDGE BANDER



### DESCRIPTION

With room to grow, this mid-level edgebender allows an entry level business to upscale, yet an established business keep up to demand. Specifications of this model include spray release agent, pre-milling, gluing, end trimming, fine radius trimming, twin motor corner rounding, radius scraping, flat scraping and off cut, spray cleaning agent, buffing and hinge protection.

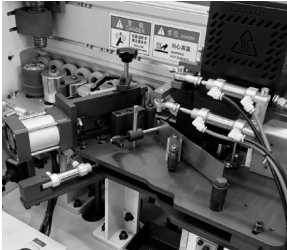
### KEY FEATURES

- Tape total meter calculation function within a period (like one day, one week or one month)
- Workpiece quantity calculation function within a period (like one day, one week or one month)
- Machine running time calculation function within a period (like one day, one week or one month)
- Workpiece thickness auto measurement, if panel thickness is over setting thickness, it pauses automatically
- Add air blow device, ensuring clean workpiece; end trimming and scraping equip with dust collecting device

## STANDARD CONFIGURATIONS

Model	EF463S
Workpiece length	Min 150 mm
Workpiece width	Min 80 mm
Workpiece thickness	10-60 mm
Edge thickness	0.4-3 mm
Edge width	12-65 mm
Feed speed	16-20 m/min
Net Weight	2205 kg
Input voltage	415 V
Input frequency	50 HZ
Output frequency	200 HZ
Total power	15.7 KW
Machine dimension	6280*850*1550 mm
Packing size	6380*1050*1720 mm

## KEY FEATURES EF463S AUTOMATIC EDGE BANDER



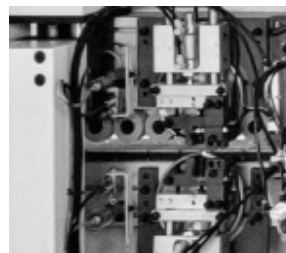
**Gluing Unit and Heating Lamp**  
High precision glue roller ensures perfect gluing on various materials. Temperature is controlled by a meter heat preservation can be set.



Automatic lubrication system, make the maintenance easy.



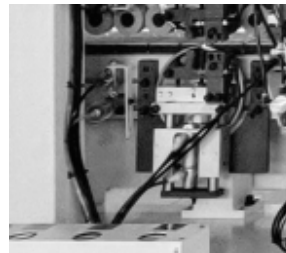
Delta Touch Screen



Off-cut by removing the PVC chips which left on the parts during the Radius scraping, which can avoid the chips winding on the buffing motors.



Heat Lamp takes the chill out the board to pre heat the board so glue does not set too quickly.



Flat Scraping  
Remove the extra glue which may be left on the panel top and bottom.



Fine Trimming & Scraping Unit  
Two motors traveling on linear guides for end trimming.



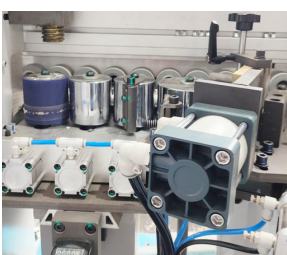
Hinge Kit Protection



End Trimming & reciprocating cloth wheels make clean and high gloss buffing. Spray cleaning agent for perfect polishing.



Gravity Fed Top Glue Pot  
Teflon Coated (nonstick)  
Easy Cleaning  
Makes colour changes easy  
EVA to PUR Glues



Edge Press by Rollers  
One big precision roller and 3 small to make sure the edge is pressed seamlessly to the workpiece. All rollers have their independent pressure control valve. The latter further ensures that the edge is properly pressed to the workpiece

## KEY FEATURES

### EF463S AUTOMATIC EDGE BANDER



Spray release agent & Pre-milling Unit Equipped with diamond tools for better cut and longer use.  
This device removes the burr or unevenness on the edge of the workpiece, leaving a smooth surface for the edge banding.  
Spray release agent for perfect pre-milling



Corner Rounding/trimming  
With 2 motors, this device works well with various edge thicknesses and invariably result in perfect round corner.

## E6 PTP CNC



### DESCRIPTION

An all-rounder work center suitable for milling, routing, drilling, side milling, sawing and other applications. Ideal for panel furniture, solid wood furniture, office furniture, wooden door productions, as well as other non-metal and soft metal applications. The double work zones guarantee non-stop work cycle where an operator can load and unload workpieces on one zone without interrupting the machine operation on the other. It features world class components from Italy and Germany with strict machining procedures.

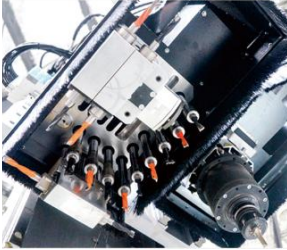
### KEY FEATURES

- Features world's first class components and strict machining procedures. The enclosure over the gantry with LED light strip for display of the machine status prevents flying out of materials and greatly enhances safety.
- The operator needs only to scan the barcode and the machine will carry out the job automatically.

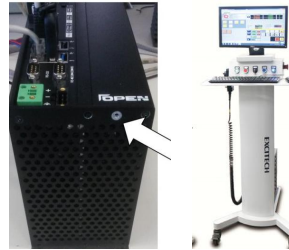
## STANDARD CONFIGURATIONS

Model	E6 PTP - 3 Axes
Traveling Size	3400*1640*250mm
Working Size	3060*1260*100mm
Table Size	3060*1200mm
Transmission	X/Y rack and pinion drive, Z ball screw drive
Table	Pods and rails from SCHMALZ
Spindle	9 KW HSD ISO Spindle
Traveling speed	80m/min
Tool magazine	8 slots carousel with Stepper motor
Software	EXCICAM
Driving system	Japan YASKAWA servo system
Cable	Germany Igus cables
Relay	Schneider relay
Controller	OSAI made in Italy with Lenovo computer I5 8GB
Tool holder	3 pieces of tool holders ISO ER32
Pump	1 set 4KW Becker pump with 140m <sup>3</sup> /h
Voltage	3P 415V 50HZ

## KEY FEATURES E6 PTP CNC



Italian HSD 9 KW Spindle  
12KW is available upon  
request (optional)  
Italian drill bank  
9(V)+6(H)+1 saw.



Italy OSAI controller.  
Powerful and friendly  
in operation  
Smart and easy to  
move console.



16 Slot Smart Carousel  
Driven via Servo Motor.  
Direct connection,  
time saving during  
tool changing



Pod and rail table that is  
divided into 2 work zones.  
This machine is mainly used  
to make solid wood door  
or for panel processing.



Japan YASKAWA Servo motor  
Shimpo reducer, reliable  
and long life span



Protective cover around  
the gantry, CE standard



Smart pop-up pins



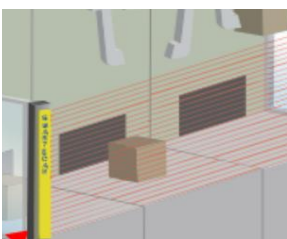
18 moveable vacuum cups,  
in 3 different sizes to work  
with various panel sizes.



Upgraded to German  
brand Becker pump with  
5.5KW, strong suction  
capacity, 250m<sup>3</sup>/h



Air conditioner for the  
cabinet, cooling down the  
inner temperature of the  
cabinet, protecting the  
electrical components inside.



Protection light curtain  
(barrier), 1320 mm  
protection range , picture  
indicated is stand style,  
lie down is available



Shown the vacuum cups  
positions for the regular  
size (not shaped size)

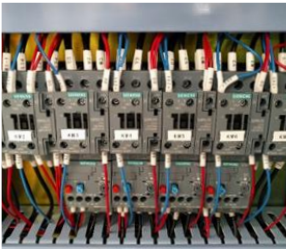
## KEY FEATURES E6 PTP CNC



Heavy load plugs enable easy installation and maintenance.





Germany Flexible Icus cables, heat resistance, wearing resistance, long life span, high quality



German Siemens Relay and button, reliable and good quality



HSD High quality C axis, rotate at 360 degrees.

Model	Picture	Unit Price	Quantity	Total
EF463S		\$52,600.00	1	\$52,600.00
E6PTP		\$189,500.00	1	\$189,500.00
Subtotal				\$242,100.00
GST(10%)				\$24,210.00
<b>Total Investment</b>				<b>\$266,310.00</b>

## TERMS AND CONDITIONS OF SALE

<b>Sale of Goods</b>	1. The "Seller" Excitech Australia Pty Ltd will sell, transfer and deliver to the "Buyer" the goods stipulated in the agreed provided tax invoice.
<b>Payment Terms</b>	2. The Buyer will accept the goods and pay for the goods as per the terms stipulated on the provided tax invoice, paid as follows: a. 30% deposit on acceptance of invoice prior to goods being ordered from the manufacturer. b. Either; 70% finance approval, undated bank guarantee or full cash payment required prior goods being shipped from the manufacturer to the Seller if the order is a custom build, Smart Factory or out of stock item. For goods that are already in stock with the Seller, 70% remaining payment is required prior to shipping to the Buyer. 3. Except as otherwise provided in this Agreement, the deposit is not refundable to the Buyer if this transaction is not completed.
<b>Delivery</b>	4. The goods will be deemed received by the Buyer when delivered to the stipulated delivery address. 5. Unless otherwise stipulated, the purchase price includes delivery and installation. Risk of Loss 6. The risk of loss from any casualty to the goods, regardless of the cause, will be on the Seller until the goods have been received by the Buyer. The Buyer will provide, at its expense, insurance on the goods.
<b>Warranties</b>	7. The Seller warrants that the Seller is the legal owner of the goods and has the right to sell the goods and warrants that the goods will be fit for purpose for which such goods are ordinarily intended. 8. The goods are sold with two (2) years manufacturer parts and labour warranty. All claims must be made within five (5) days of any issue arising.
<b>Security Interest</b>	9. The Seller remains a security interest in the goods until paid in full. Buyers Responsibility 10. The Buyer confirms the installation location meets the requirements of the Seller. This includes installation location that is cleared of all obstructions and has adequate space for the machine, accessories and operator work space. The purchaser accepts that any costings arising from the installation location not being prepared, or being unsuitable for the installation will be charged to the Buyer.
<b>Installation</b>	11. A vendor technician will install and train the Buyer in the goods operation. Estimated time frame will be discussed prior to delivery, but may take reasonably longer and will be discussed. Excuse for Delay or Failure to Perform 12. The Seller will not be liable in any way for any delay, non-delivery or default in shipment due to labour disputes, transportation shortage, delays in receipt of anything beyond the control of the Seller or its suppliers. If the Seller, in its sole judgment, will be prevented directly or indirectly, on account of any cause beyond its control, from delivering the goods at the time specified or within one month after the date of agreed delivery, then the Seller will have the right to terminate this Agreement by notice in writing to the Buyer, which notice will be accompanied by full refund of all sums paid by the Buyer pursuant to this Agreement. In all other cases, if the Seller fails to deliver the goods to the Buyer within the time and manner specified in this Agreement, the Buyer may provide written notice of the default to the Seller. If within seven (7) days of the notice being received, or within such other time period as agreed to by the parties, the default is not corrected, the Buyer may immediately terminate this Agreement.
<b>Installation Cancellation</b>	13. The Seller reserves the right to cancel this Agreement if the Buyer fails to pay for any shipment when due; in the event of the Buyers insolvency or bankruptcy; or if the Seller deems that its prospect of payment is impaired.

**Customer / Company**

Mike Fleischmann  
Cad Cam Australia

**Purchasers Signature**

\_\_\_\_\_  
Date:

**Sellers Signature**

\_\_\_\_\_  
Date: 19-09-2025